

**Water and Compressed Air Service  
Pressure Regulator 1/4" Tube Connection**

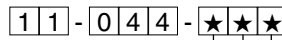
- **Non-relieving models.**
- **Acetal plastic, corrosion resistant construction**
- **Low torque, non-rising adjusting knob.**
- **Snap action knob locks pressure setting when pushed down.**
- **Designed for use with deionized water and potable water systems. Plastics and metals in contact with fluid are approved by the National Sanitation Foundation (NSF) for use in potable water systems. Elastomers are food grade.**
- **Can be disassembled without the use of tools or removal from the air or water line.**



**Ordering Information.** Models listed include non-relieving diaphragm, and 5 to 100 psig (0.3 to 7 bar) outlet pressure adjustment range †.

Port Connection	Model	Flow* scfm (dm <sup>3</sup> /s)	Flow** U.S. gpm (lpm)	Weight lb (kg)
1/4" tube nut and ferrule	11-044-003	3.0 (1.4)	0.7 (2.65)	0.16 (0.08)

**Alternative Models**



Outlet Pressure Adjustment Range†	Substitute
1 to 10 psig (0.1 to 0.7 bar)	001
2 to 50 psig (0.3 to 3.5 bar)	002
5 to 100 psig (0.3 to 7 bar)	003

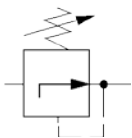
\* Approximate flow with 100 psig (7 bar) inlet pressure, 90 psig (6.3 bar) set pressure and a 15 psig (1 bar) droop from set.

\*\* Approximate flow with 100 psig (7 bar) inlet pressure, 60 psig (4 bar) set pressure and a 15 psig (1 bar) droop from set.

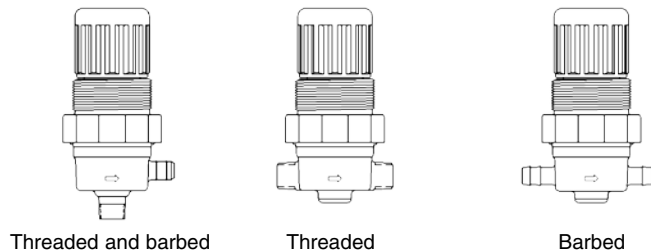
† Outlet pressure can be adjusted to pressures in excess of, and less than, those specified. Do not use these units to control pressures outside of the specified ranges.

**Alternate fitting and port orientations available**

**ISO Symbols**



Non relieving



Contact Norgren for more information

# 11-044 Special Purpose Regulator

All Dimensions in Inches (mm)

## Technical Data

Fluid: Water and compressed air

Maximum pressure: 250 psig (17 bar)

Operating temperature:

Water service: 35° to 150°F (2° to 66°C)

Air service: -30° to 150°F (-34° to 66°C) \*

\* When used in air service, air supply must be dry enough to avoid ice formation at temperatures below 35°F (2°C).

Port connections: 1/4" OD tube (brass nut and plastic ferrule supplied)

Recommended tubing: 1/4" soft PVC or Polyethylene tubing. Avoid aluminum, copper, and hard plastic tubing.

Typical flow:

Compressed air service at 100 psig (7 bar) inlet pressure, 90 psig (6.3 bar) set pressure and a droop of 15 psig (1 bar) from set: 3.0 scfm (1.4 dm<sup>3</sup>/s)

Water service at 100 psig (7 bar) inlet pressure, 60 psig (4 bar) set pressure and a droop of 15 psig (1 bar) from set:  
 0.7 U.S. gpm (2.65 liters per minute)

No gauge ports

Materials

Body: Acetal

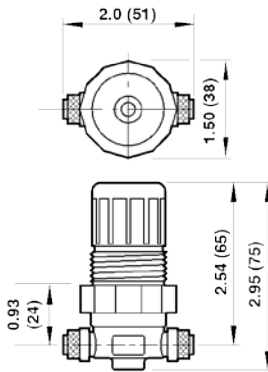
Bonnet: Acetal

Valve: Stainless steel with EPDM seal (NSF approved)

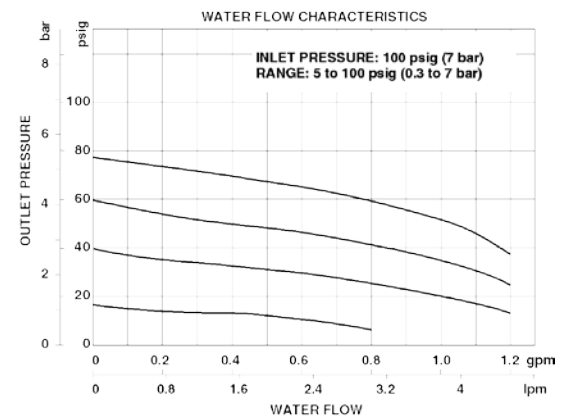
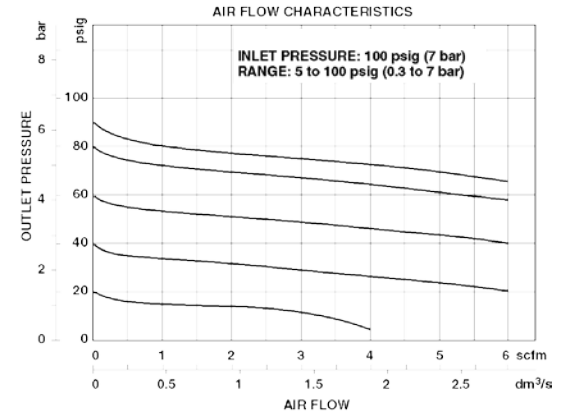
Valve seat: Acetal

Diaphragm: Stainless steel and nitrile (NSF approved)

Panel mounting hole diameter: 1.19" (30 mm)  
 Maximum panel thickness: 0.25" (6 mm)



## Typical Performance Characteristics



## Service Kits

Type	Part number
Non-relieving	3407-59

Service kit includes slip ring, valve seat, valve, valve spring, and diaphragm.

## WARNING

These products are intended for use in industrial compressed air systems only. Do not use these products where pressures and temperatures can exceed those listed under Specifications.

Before using these products with fluids other than those specified, for nonindustrial applications, life-support systems, or other applications not within published specifications, consult NORGREN.

Through misuse, age, or malfunction, components used in fluid power systems can fail in various modes. The system designer is warned to consider the failure modes of all component parts used in fluid power systems and to provide adequate safeguards to prevent personal injury or damage to equipment in the event of such failure modes. System designers must provide a warning to end users in the system instructional manual if protection against a failure mode cannot be adequately provided.

System designers and end users are cautioned to review specific warnings found in instruction sheets packed and shipped with these products. System designers should also provide for all OSHA requirements including Title 29 CFR 1910.147 Lockout/Tagout.

It should be recognized that warnings are valid for any product, regardless of manufacturer, and are not restricted to products manufactured by NORGREN. NORGREN's reputation for product quality and performance is well established.

## WARRANTY

Items sold by NORGREN are warranted to be free from defects in materials and workmanship for a period of two year from the date of manufacture, provided said items are used according to NORGREN's recommended usages. NORGREN's liability is limited to the repair of, refund of purchase price paid for, or replacement in kind of, at NORGREN's sole option, any items proved defective, provided the allegedly defective items are returned to NORGREN prepaid. The warranties expressed above are in lieu of and exclusive of all other warranties.

There are no other warranties, expressed or implied, except as stated herein. There are no implied warranties of merchantability or fitness for a particular purpose, which are specifically disclaimed. NORGREN's liability for breach of warranty as herein stated is the exclusive remedy, and in no event shall NORGREN be liable or responsible for incidental or consequential damages, even if the possibility of such incidental or consequential damages has been made known to NORGREN.

NORGREN reserves the right to discontinue manufacture of any product or change product materials, design, or specifications.