

- > **Port size: 1/4" ... 1/2"**
(ISO G/PTF)
- > **Excelon design allows in-line installation or modular installation with other Excelon products**
- > **Quick release bayonet bowl**



Technical features

Medium:

Compressed air only

Maximum operating pressure:

Transparent bowls:

10 bar (150 psi)

Metal bowls:

17 bar (250 psi)

Filter element:

5 or 40 µm

Port size:

G1/4, G3/8, G1/2,

1/4 PTF, 3/8 PTF, 1/2 PTF

Flow:

35 dm³/s at port size: G3/8

Inlet pressure: 6,3 bar (91 psi)

Δp: 0,5 bar (7.2 psi)

Filter element: 40 µm

Drain:

Manual or automatic

Automatic drain operating conditions (float operated):

Bowl pressure required to close drain: > 0,3 bar (5 psi)

Bowl pressure required to open drain: ≤ 0,2 bar (3 psi)

Minimum air flow required to close drain: 0,1 dm³/s (0.2 scfm)

Manual operation: depress pin inside drain outlet to drain bowl

Service life indicator:

Available on request

Ambient/Media temperature:

Transparent bowl:

-34 ... +50°C (-30 ... +125°F)

Metal bowl:

-34 ... +80°C (-30 ... +175°F)

Air supply must be dry enough

to avoid ice formation at temperatures below +2°C (+35°F).

Materials:

Body: die cast aluminium

Bowl: Transparent PC alternative

transparent PC with steel guard

alternative aluminium

Liquid level indicator lens (metal

bowl): transparent PA

Filter element: sintered PP

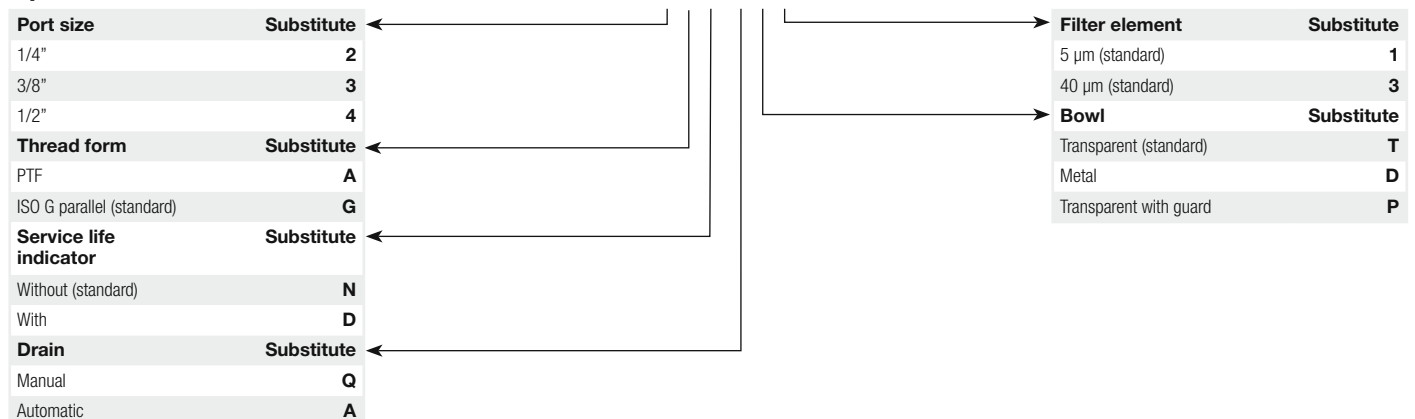
Elastomers: CR & NBR

Technical data - standard models

Symbol	Port size	Size	Drain	Filter element (µm)	Bowl	Weight (kg)	Model
	G1/4	—	Manual	40	PC (transparent)	0,50	F73G-2GN-QT3
	G3/8	Basic	Manual	40	PC (transparent)	0,50	F73G-3GN-QT3
	G1/2	—	Manual	40	PC (transparent)	0,50	F73G-4GN-QT3
	G1/4	—	Manual	5	PC (transparent)	0,50	F73G-2GN-QT1
	G3/8	Basic	Manual	5	PC (transparent)	0,50	F73G-3GN-QT1
	G1/2	—	Manual	5	PC (transparent)	0,50	F73G-4GN-QT1
	G1/4	—	Automatic	40	PC (transparent)	0,50	F73G-2GN-AT3
	G3/8	Basic	Automatic	40	PC (transparent)	0,50	F73G-3GN-AT3
	G1/2	—	Automatic	40	PC (transparent)	0,50	F73G-4GN-AT3
	G1/4	—	Automatic	5	PC (transparent)	0,50	F73G-2GN-AT1
	G3/8	Basic	Automatic	5	PC (transparent)	0,50	F73G-3GN-AT1
	G1/2	—	Automatic	5	PC (transparent)	0,50	F73G-4GN-AT1

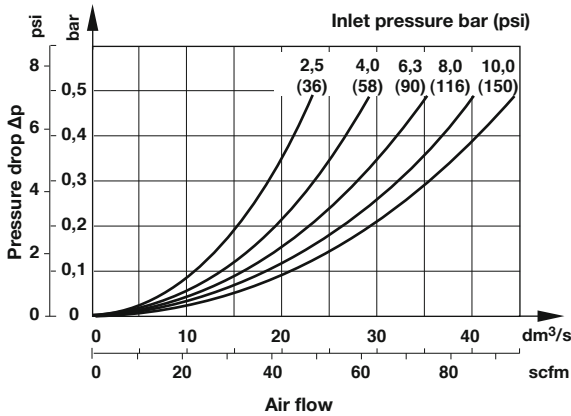
Option selector

F73G-★-★-★-★-★-★

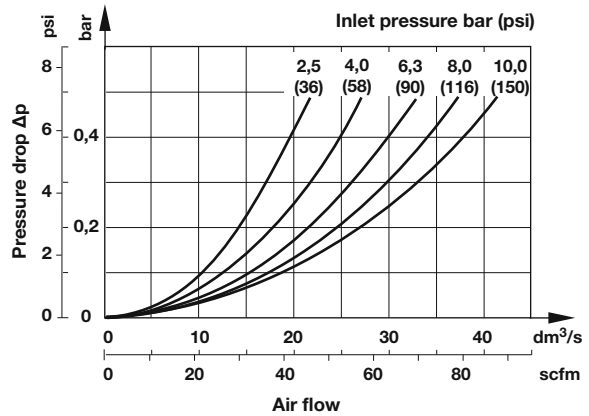


Flow characteristics

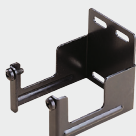






Element 40 µm
 Port size G3/8



Element 5 µm
 Port size G3/8






Accessories

Wall mounting bracket	Quikclamp®	Quikclamp with wall bracket®	Quikmount pipe adaptor *1)	Porting block with three alternative 1/4" ports	2/2 Shut-off valves (for full technical specification see datasheet 8.180.600)	3/2 Shut-off valves (for full technical specification see datasheet 8.180.600)
						
Page 3	Page 3	Page 3	Page 3	Page 3	Page 3	Page 3
4424-50	4314-51	4314-52	G1/4: 4315-09 G3/8: 4315-10 G1/2: 4315-11 1/4 PTF: 4315-01 3/8 PTF: 4315-02 1/2 PTF: 4315-03	G1/4: 4316-52 1/4 PTF: 4316-50	G1/4: T73B-2GA-P1N G3/8: T73B-3GA-P1N G1/2: T73B-4GA-P1N 1/4 PTF: T73B-2AA-P1N 3/8 PTF: T73B-3AA-P1N 1/2 PTF: T73B-4AA-P1N	G1/4: T73T-2GA-P1N G3/8: T73T-3GA-P1N G1/2: T73T-4GA-P1N 1/4 PTF: T73T-2AA-P1N 3/8 PTF: T73T-3AA-P1N 1/2 PTF: T73T-4AA-P1N




*1) Please use a Quikmount pipe adaptor if the Quikclamp be mounted at inlet or outlet side.

Pressure switch

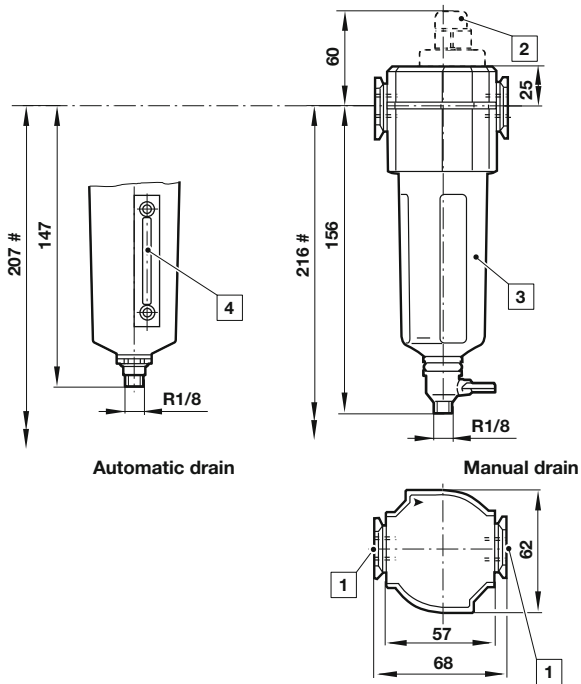
Porting block for pressure switch	Pressure switch (0,5 ... 8 bar)	Padlock (brass) with two keys *1)
		
Page 3		
0523110000000000	0881300000000000	0613633000000000

*1) for shut-off valves

Service kits

Manual drain	Automatic drain	Replacement element
		
F73G-KITM40 (40 µm)	F73G-KITA40 (40 µm)	4438-03 (40 µm) 4438-01 (5 µm)

Drawings

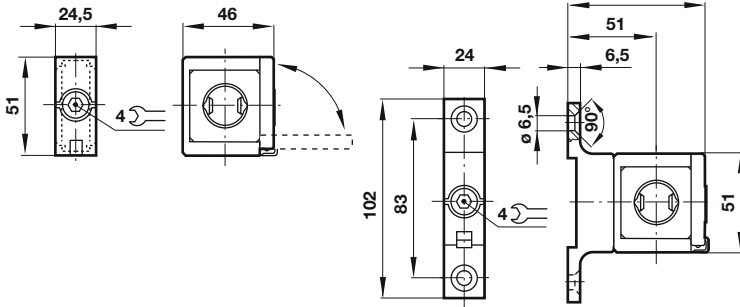
 Dimensions in mm
 Projection/First angle


- # Minimum clearance required to remove bowl
- 1 Main ports 1/4", 3/8" or 1/2"
 - 2 Service life indicator optional
 - 3 Transparent bowl with or without guard
 - 4 Metal bowl with liquid level indicator lens

Accessories

Quikclamp®

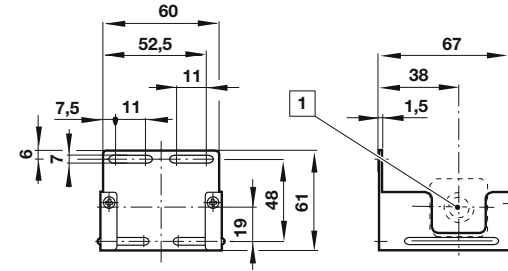
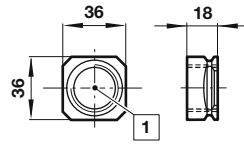
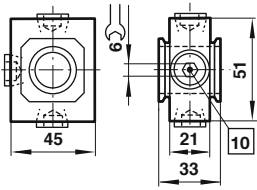
Quikclamp® with wall bracket



Porting block

Pipe adapter

Wall mounting bracket



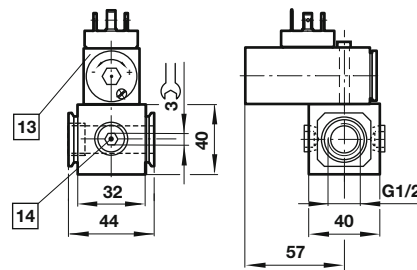
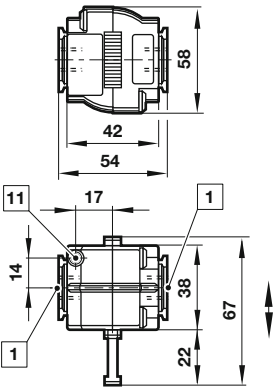
10 Ports 1/4" ISO G/PTF plugged

1 Main ports 3/8", 1/2" or 3/4"
(ISO G/PTF)

1 Main ports
(ISO G/PTF)

Shut-off valves

Porting block for pressure switch



1 Main ports 1/4", 3/8" or 1/2"
(ISO G/PTF)

13 Pressure switch is not in scope of delivery
14 Alternative G1/4 ports plugged

11 Exhaust port M5 at 3/2 valve only

Warning

These products are intended for use in industrial compressed air systems only. Do not use these products where pressures and temperatures can exceed those listed under »**Technical features/data**«.

Before using these products with fluids other than those specified, for non-industrial applications, life-support systems or other applications not within published specifications, consult IMI Precision Engineering, Norgren Inc.

Through misuse, age, or malfunction, components used in fluid power systems can fail in various modes. The system designer is warned to consider the failure modes of all component parts used in fluid power systems and to provide adequate safeguards to prevent personal injury or damage to equipment in the event of such failure.

System designers must provide a warning to end users in the system instructional manual if protection against a failure mode cannot be adequately provided.

System designers and end users are cautioned to review specific warnings found in instruction sheets packed and shipped with these products.