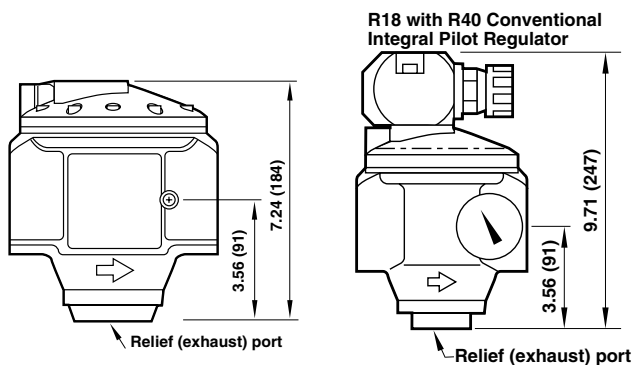
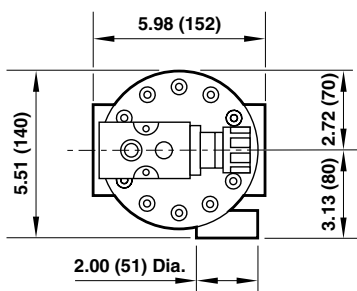


MAINLINE, GENERAL PURPOSE UNITS

R18 Series Pilot operated regulators

1-1/2" PTF, 2" PTF



The R18 remote pilot operated regulator can be installed at any point in the compressed air system without regard to accessibility – pilot regulator can be installed in the most convenient location

The R18 with conventional integral pilot enables easy pressure adjustment at the regulator

Balanced valve minimises effect of changes in inlet pressure on outlet pressure

Constant bleed feature in pilot regulator provides quick response and minimum dead-band

Exceptionally high relief flow

TECHNICAL DATA

Fluid:

Compressed air

Inlet pressure range:

10 to 450 psig (0.7 to 31 bar)

Operating

temperature:

-30°F to 175°F [-34°C to 80°C]

ISO Symbol



Models

R18 REMOTE PILOT Model No. PTF	Port size (dm ³ /s)	Flow SCFM* (dm ³ /s)	Operation	Adjustment method	Gauge 0 to 160 psig	Service kit**
--------------------------------	--------------------------------	---------------------------------	-----------	-------------------	---------------------	---------------



R18-B00-RNXA	1-1/2"	2000 (944)	Relieving	Remote pilot	18-013-209	5945-40
R18-C00-RNXA	2"	2000 (944)	Relieving	Remote pilot	18-013-209	5945-40

R18 INTEGRAL PILOT Model No. size	Port (dm ³ /s)	Flow SCFM* PSIG (bar)	Outlet pressure	Operation	Adjustment method	Gauge 0 to 160 psig
-----------------------------------	---------------------------	-----------------------	-----------------	-----------	-------------------	---------------------



R18-B05-RNLA	1-1/2"	2000 (944)	5 to 125 (.3 to 3.5)	Relieving	Integral pilot	18-013-209	5945-40
R18-C05-RNLA	2"	2000 (944)	5 to 125 (.3 to 3.5)	Relieving	Integral pilot	18-013-209	5945-40

* Typical flow with a 40 µm element at 90 psig (6.3 bar) inlet pressure and 5 psig (0.35 bar) pressure drop.

** Kit includes: Filter screen, and all O-rings

Service – Quality – Delivery

NorgrenExpress.com – 1.800.514.0129 – Help@NorgrenExpress.com



NORGREN
Express

ALE-39