

# Olympian Plus Regulators

## R64G/R, R68G

- Olympian Plus plug in design
- High flow general purpose regulator
- Push to lock adjusting knob with tamper resistant option
- Mount in any orientation

### Technical data

#### R64G/R

Maximum pressure:  
250 psig (17 bar)

Typical flow at 150 psig (10 bar) inlet pressure, 90 psig (6.3 bar) set pressure and a droop of 15 psig (1 bar) from set:  
254 scfm (120 dm<sup>3</sup>/s)

Operating temperature\*:  
-30° to 175°F (-34° to 80°C)

#### R68G

Maximum pressure:  
300 psig (20 bar)

Typical flow at 150 psig (10 bar) inlet pressure, 90 psig (6.3 bar) set pressure and a droop of 15 psig (1 bar) from set (68):  
370 scfm (170 dm<sup>3</sup>/s)

Operating temperature\*:  
0° to +175°F (-20° to +80°C)

\* Air supply must be dry enough to avoid ice formation at temperatures below +35°F (+2°C).

### Materials

#### R64G/R

- Body: Zinc
- Bonnet: Aluminum
- Yoke: Zinc
- Elastomers: Nitrile

#### R68G

- Body: Aluminum
- Yoke: Aluminum
- Bonnet: Aluminum
- Adjusting knob: Acetal resin
- Valve: Aluminum
- Optional T-bar adjusting screw: Steel
- Elastomers: Nitrile



R64G/R

R68G

### Ordering Information

Models listed are with PTF threads, knob adjustment, relieving type, with gauge (not shown).

Port Size	Model	Flow† scfm (dm <sup>3</sup> /s)	Weight lb (kg)
1/2"	R64G-4AK-RMG	254 (120)	3.31 (1.49)
1"	R68G-8AK-RLG	360 (170)	4.16 (1.89)
1-1/4"	R68G-AAK-RLG	360 (170)	4.24 (1.93)
1-1/2"	R68G-BAK-RLG	360 (170)	4.33 (1.97)

† Typical flow with 150 psig (10 bar) inlet pressure, 90 psig (6.3 bar) set pressure and a 15 psig (1 bar) droop from set.

### Options selector (R64G)

Flow type	Substitute	Gauge	Substitute
Standard	G	With	G
		Without	N
Port size	Substitute	Outlet pressure adjustment range*	Substitute
1/4"	2	5 to 60 psig (0.3 to 4 bar)	F
3/8"	3	5 to 150 psig (0.3 to 10 bar)	M
1/2"	4	10 to 250 psig (0.7 to 17 bar)	S**
3/4"	6		
Threads	Substitute		
PTF	A		
ISO G parallel	G		
Adjustment	Substitute		
Knob	K		
T-bar	T		

\* Can be adjusted to pressures in excess of, and less than, those specified. Do not use these units to control pressures outside of the specified ranges.

\*\* Units with 250 psig outlet pressure range are available only with the T-bar adjustment; therefore substitute T at the 7th digit and S at the 9th position.

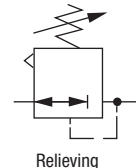
### Options selector (R68G)

Port size	Substitute	Gauge	Substitute
3/4"	6	With	G
1"	8	Without	N
1 1/4"	A	Outlet pressure adjustment range*	Substitute
1 1/2"	B	0 to 60 psig (0.3 to 4 bar)	F
None	N	5 to 120 psig (0.4 to 8 bar)	L
		10 to 250 psig (0.7 to 17 bar)	S**
Threads	Substitute		
PTF	A		
ISO G parallel	G		
No Yoke (N in 5th position)			
1/8 Rc threaded gauge ports	N		
No Yoke (N in 5th position)			
PTF threaded gauge ports	A		
Adjustment	Substitute		
Knob	K		
T-bar	T		

\* Can be adjusted to pressures in excess of, and less than, those specified. Do not use these units to control pressures outside of the specified ranges.

\*\* Units with 250 psig outlet pressure range are available only with the T-bar adjustment; therefore substitute T at the 7th digit and S at the 9th position.

### ISO Symbol



# Olympian Plus Regulators

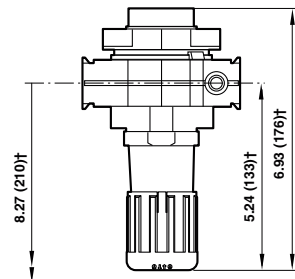
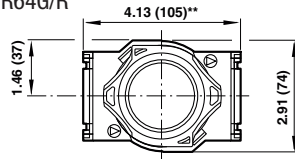
**R64G/R, R68G**  
Dimensions in inches (mm)

## Accessories

	Bracket kit	Bracket kit	Gauge 0 ... 160 psig*	3/2 Shut-off valve	Single yoke	Double yoke	Panel nut	Tamper resistant kit	Service Kits	
R64G	1/4	—	74504-50	18-013-204	T64E-2AB-P1N	Y64A-2AA-N1N	Y64A-2AA-N2N	4348-89	4355-50	Relieving 4381-200
	3/8	—	74504-50	18-013-204	T64E-3AB-P1N	Y64A-3AA-N1N	Y64A-3AA-N2N	4348-89	—	Non relieving 4381-201
	1/2	—	74504-50	18-013-204	T64E-4AB-P1N	Y64A-4AA-N1N	Y64A-4AA-N2N	—	—	—
	3/4	—	74504-50	18-013-204	T64E-6AB-P1N	Y64A-6AA-N1N	Y64A-6AA-N2N	4348-89	—	—
R68G	3/4	18-001-979	—	18-013-204	T68E-6AB-B2N	Y68A-6AN-N1N	Y68A-6AN-N2N	—	4355-50	Relieving 4381-300
	1	18-001-979	—	18-013-204	T68E-8AB-B2N	Y68A-8AN-N1N	Y68A-8AN-N2N	—	—	Non relieving 4381-301
	1-1/4	18-001-978	—	18-013-204	T68E-AAB-B2N	Y68A-AAN-N1N	Y68A-AAN-N2N	—	—	—
	1-1/2	—	—	18-013-204	T68E-BAB-B2N	Y68A-BAN-N1N	Y68A-BAN-N2N	—	—	—

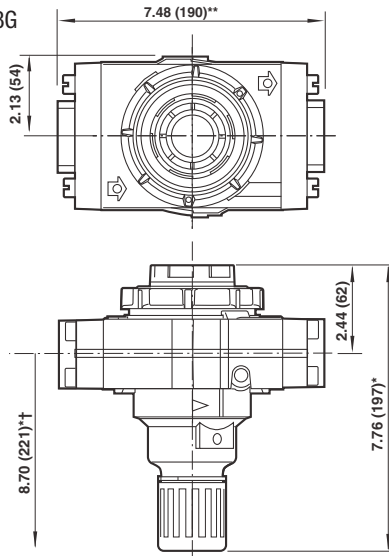
\* For additional pressures and options see our website.

### R64G/R



† Reduces by 4 mm with knob in locked position. Add 37 mm for unit with 'T' handle.  
\*\* 6.18" (157 mm) for models with 3/4" ports

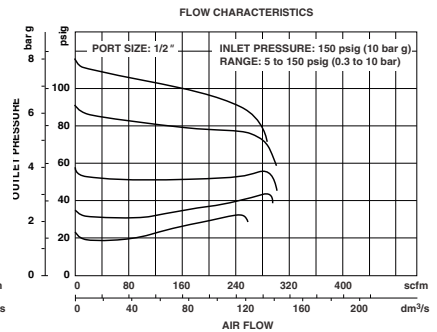
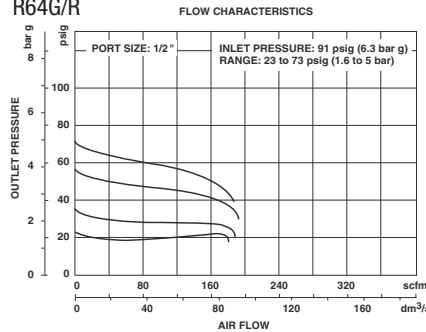
### R68G



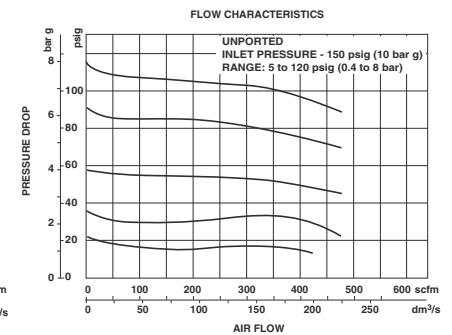
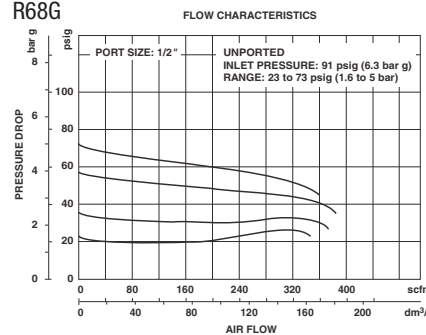
\* Add 1.46" (37mm) for unit with T-bar.  
\*\* Add 0.39" (10mm) 1-1/4" and 1-1/2" models.  
† Minimum clearance required to remove unit.

## Typical Performance Characteristics

### R64G/R



### R68G



Panel mounting hole diameter: 2.06" (52 mm)  
Maximum panel thickness: 0.25" (6 mm)