

Non-relieving models.**Acetal plastic, corrosion resistant construction****Low torque, non-rising adjusting knob.****Designed for use with deionized water and potable water systems.****Plastic (not assembly) is NSF approved.****All elastomers are CFR 21 FDA food and water contact compliant.****Non-relieving models only.****Technical data****Fluid:**

Water and compressed air, neutral gases

NOTE: Contact technical support for use with other media.**Maximum pressure:**

250 psig (17 bar)

Operating temperature:

Water service: 35° to 150°F (2° to 66°C)

Air service: -30° to 150°F (-34° to 66°C) *

*When used in air service, air supply must be dry enough to avoid ice formation at temperatures below 35°F (2°C).

Port connections:

1/4" OD tube (brass nut and plastic ferrule supplied)

Recommended tubing: 1/4" soft PVC or Polyethylene tubing. Avoid aluminum, copper, and hard plastic tubing.

Materials

Body: Acetal

Bonnet: Acetal

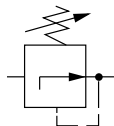
Valve: Stainless steel with EPDM seal (CFR21 FDA food and water contact compliant)

Valve seat: Acetal

Diaphragm: Stainless steel and nitrile (CFR21 FDA food and water contact compliant)

Ordering information

Model listed has non-relieving diaphragm, and 5 to 100 psig (0.3 to 7 bar) outlet pressure adjustment range.†

ISO Symbols	Port Connection	Model	Flow* scfm (dm ³ /s)	Flow** U.S. gpm (lpm)	Weight lb (kg)
 Non relieving	1/4" tube nut and ferrule	11 044 003	3.0 (1.4)	0.7 (2.65)	0.16 (0.08)

For additional models contact the factory.

* Approximate flow with 100 psig (7 bar) inlet pressure, 90 psig (6.3 bar) set pressure and a 15 psig (1 bar) droop from set.

** Approximate flow with 100 psig (7 bar) inlet pressure, 60 psig (4 bar) set pressure and a 15 psig (1 bar) droop from set.

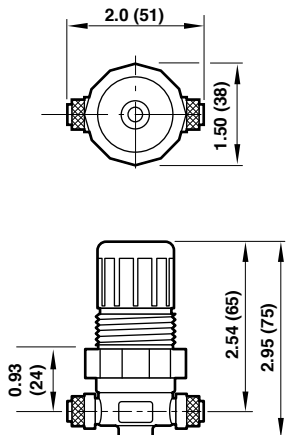
† Outlet pressure can be adjusted to pressures in excess, and less than, those specified. Do not use these units to control pressures outside of the specified ranges.

Alternative Models

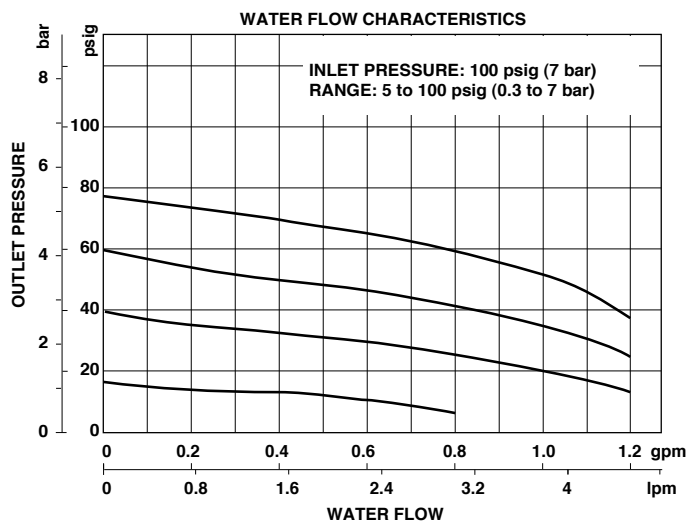
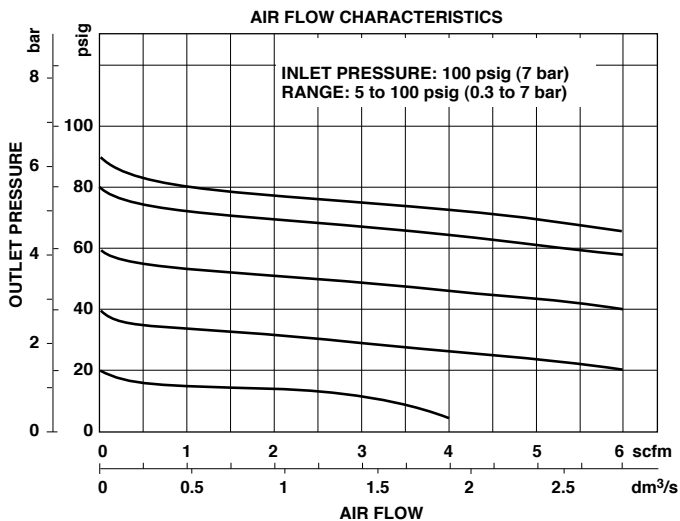
11-044-***

Outlet Pressure Adjustment Range†	Substitute
1 to 10 psig (0.1 to 0.7 bar)	001
2 to 50 psig (0.3 to 3.5 bar)	002
5 to 100 psig (0.3 to 7 bar)	003

Panel mounting hole diameter: 1.19" (30 mm)
 Maximum panel thickness: 0.25" (6 mm)



Typical Performance Characteristics



Service Kits

Type	Part number
Non-relieving	3407-59

Service kit includes slip ring, valve seat, valve, valve spring, and diaphragm.

Dimensions in inches (mm)