

Olympian Plus plug in design
High flow general purpose regulator
Push to lock adjusting knob with
tamper resistant option
Mount in any orientation



Technical data

R64G/R

Maximum pressure:
250 psig (17 bar)
Operating temperature*:
-0° to 175°F (-20° to 80°C)

R68G

Maximum pressure:
300 psig (20 bar)
Operating temperature*:
0° to +175°F (-20° to +80°C)
 * Air supply must be dry enough to
 avoid ice formation at temperatures
 below +35°F (+2°C).

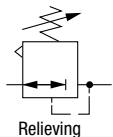
Materials

R64G/R
 Body: zinc
 Bonnet: aluminum
 Yoke: zinc
 Elastomers: nitrile
 Valve: Polypropylene and TPV

R68G

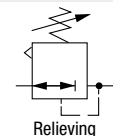
Body: aluminum
 Yoke: aluminum
 Bonnet: aluminum
 Adjusting knob: acetal resin
 Valve: aluminum
 Optional T-bar adjusting screw:
 steel
 Elastomers: nitrile

R64G Ordering information

ISO Symbol	Port Size	Model	Flow† scfm (dm3/s)	Weight lb (kg)
	1/4"	R64G-2AK-RMN	74 (35)	3.40 (1.54)
	3/8"	R64G-3AK-RMN	170 (80)	3.35 (1.52)
	1/2"	R64G-4AK-RMN	254 (120)	3.28 (1.49)
	3/4"	R64G-6AK-RMN	254 (120)	4.08 (1.85)

† Typical flow with 150 psig (10 bar) inlet pressure, 90 psig (6.3 bar) set pressure and a 15 psig (1 bar) droop from set.

R68G Ordering information

ISO Symbol	Port Size	Model	Flow† scfm (dm3/s)	Weight lb (kg)
	3/4"	R68G-6AK-RLN	318 (150)	4.30 (1.95)
	1"	R68G-8AK-RLN	381 (180)	4.20 (1.89)
	1-1/4"	R68G-AAK-RLN	381 (180)	4.25 (1.93)
	1-1/2"	R68G-BAK-RLN	381 (180)	4.34 (1.97)

† Typical flow with 150 psig (10 bar) inlet pressure, 90 psig (6.3 bar) set pressure and a 15 psig (1 bar) droop from set.

Options selector (R64G)
R64G - ★★ - R★★

Port size	Substitute
1/4"	6
3/8"	8
1/2"	A
3/4"	B
None	N
Threads	Substitute
PTF	A
ISO G parallel	G
No Yoke (N in 5th position)	N
1/8 Rc threaded gauge ports in body	
No Yoke (N in 5th position)	A
PTF threaded gauge ports in body	
Adjustment	Substitute
Knob	K
T-bar	T

Gauge	Substitute
With	G
Without	N
Outlet pressure adjustment range*	Substitute
5 to 60 psig (0.3 to 4 bar)	F
5 to 150 psig (0.3 to 10 bar)	M
10 to 250 psig (0.7 to 17 bar)	S**

* Can be adjusted to pressures in excess of, and less than, those specified. Do not use these units to control pressures outside of the specified ranges.

** Units with 250 psig outlet pressure range are available only with the T-bar adjustment; therefore substitute "T" in the 7th digit and "S" in the 9th position.

Options selector (R68G)
R68G - ★★ - R★★

Port size	Substitute
3/4"	6
1"	8
1-1/4"	A
1-1/2"	B
None	N
Threads	Substitute
PTF	A
ISO G parallel	G
No Yoke (N in 5th position)	N
1/8 Rc threaded gauge ports in body	
No Yoke (N in 5th position)	A
PTF threaded gauge ports in body	
Adjustment	Substitute
Knob	K
T-bar	T

Gauge	Substitute
With	G
Without	N
Outlet pressure adjustment range*	Substitute
0 to 60 psig (0.3 to 4 bar)	F
5 to 120 psig (0.4 to 8 bar)	L
10 to 250 psig (0.7 to 17 bar)	S**

* Can be adjusted to pressures in excess of, and less than, those specified. Do not use these units to control pressures outside of the specified ranges.

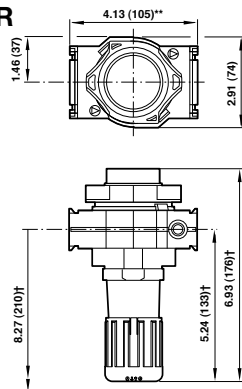
** Units with 250 psig outlet pressure range are available only with the T-bar adjustment; therefore substitute "T" in the 7th digit and "S" in the 9th position.

Accessories

	Bracket kit	Bracket kit	Gauge 0 ... 160 psig*	3/2 Shut-off valve	Single yoke	Double yoke	Nut	Tamper resistant kit	Service kit	
R64G	1/4	-	74504-50	18-013-204	T64E-2AB-P1N	Y64A-2AA-N1N	Y64A-2AA-N2N	4348-89	4355-50	Relieving 4381-200
	3/8	-	74504-50	18-013-204	T64E-3AB-P1N	Y64A-3AA-N1N	Y64A-3AA-N2N	4348-89		
	1/2	-	74504-50	18-013-204	T64E-4AB-P1N	Y64A-4AA-N1N	Y64A-4AA-N2N			
	3/4	-	74504-50	18-013-204	T64E-6AB-P1N	Y64A-6AA-N1N	Y64A-6AA-N2N	4348-89		
R68G	3/4	18-001-979	-	18-013-204	T68E-6AB-B2N	Y68A-6AN-N1N	Y68A-6AN-N2N	-	4355-50	Relieving 4381-300
	1	18-001-979	-	18-013-204	T68E-8AB-B2N	Y68A-8AN-N1N	Y68A-8AN-N2N	-		
	1-1/4	18-001-978	-	18-013-204	T68E-AAB-B2N	Y68A-AAN-N1N	Y68A-AAN-N2N	-		
	1-1/2	-	-	18-013-204	T68E-BAB-B2N	Y68A-BAN-N1N	Y68A-BAN-N2N	-		

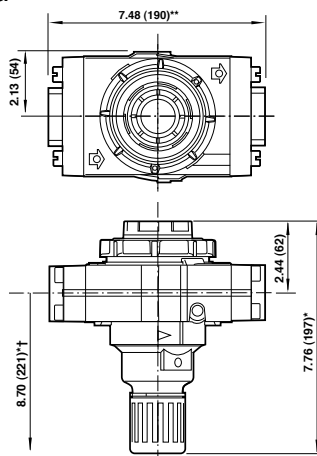
* For additional pressures and options see our website.

R64G/R



† Reduces by 4 mm with knob in locked position.
Add 37 mm for unit with 'T' handle.
** 6.18" (157 mm) for models with 3/4" ports

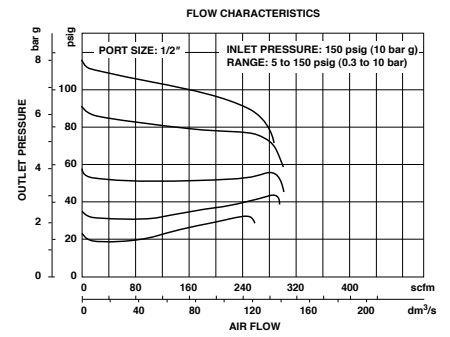
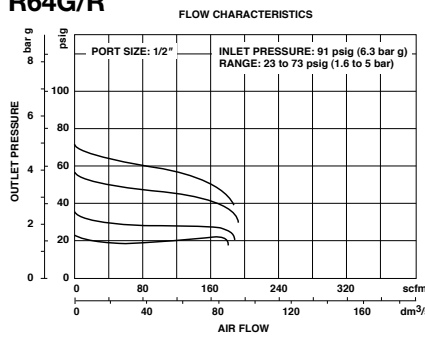
R68G



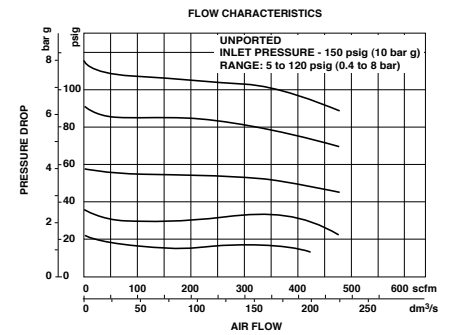
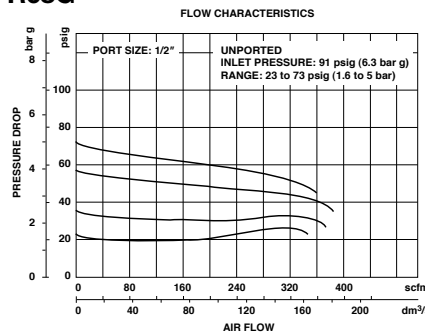
* Add 1.46" (37mm) for unit with T-bar.
** Add 0.39" (10mm) 1-1/4" and 1-1/2" models.
† Minimum clearance required to remove unit.

Typical Performance Characteristics

R64G/R



R68G



Panel mounting hole diameter: 2.06" (52 mm)
Maximum panel thickness: 0.25" (6 mm)

Dimensions in inches (mm)